

CLOUT/SA

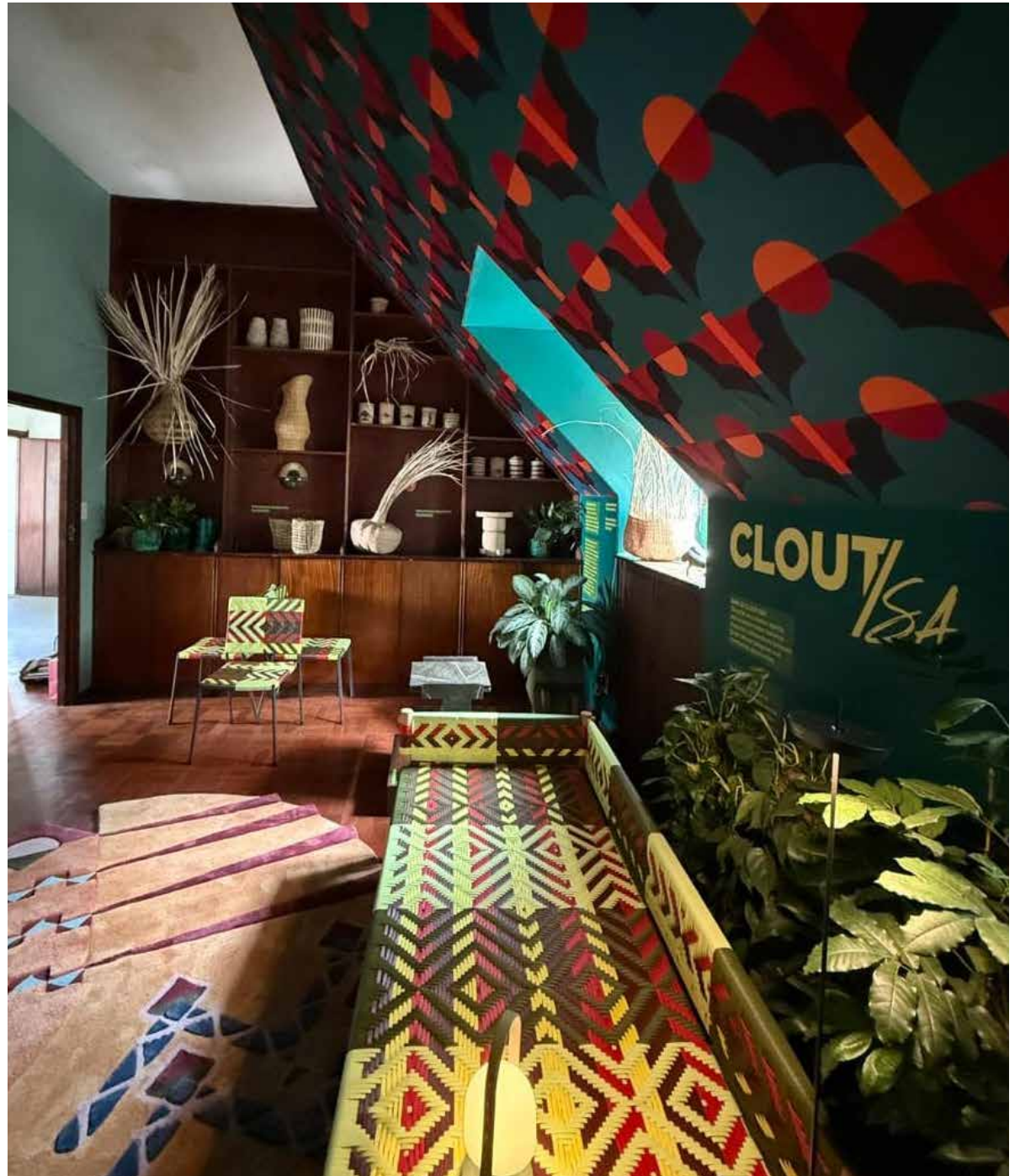
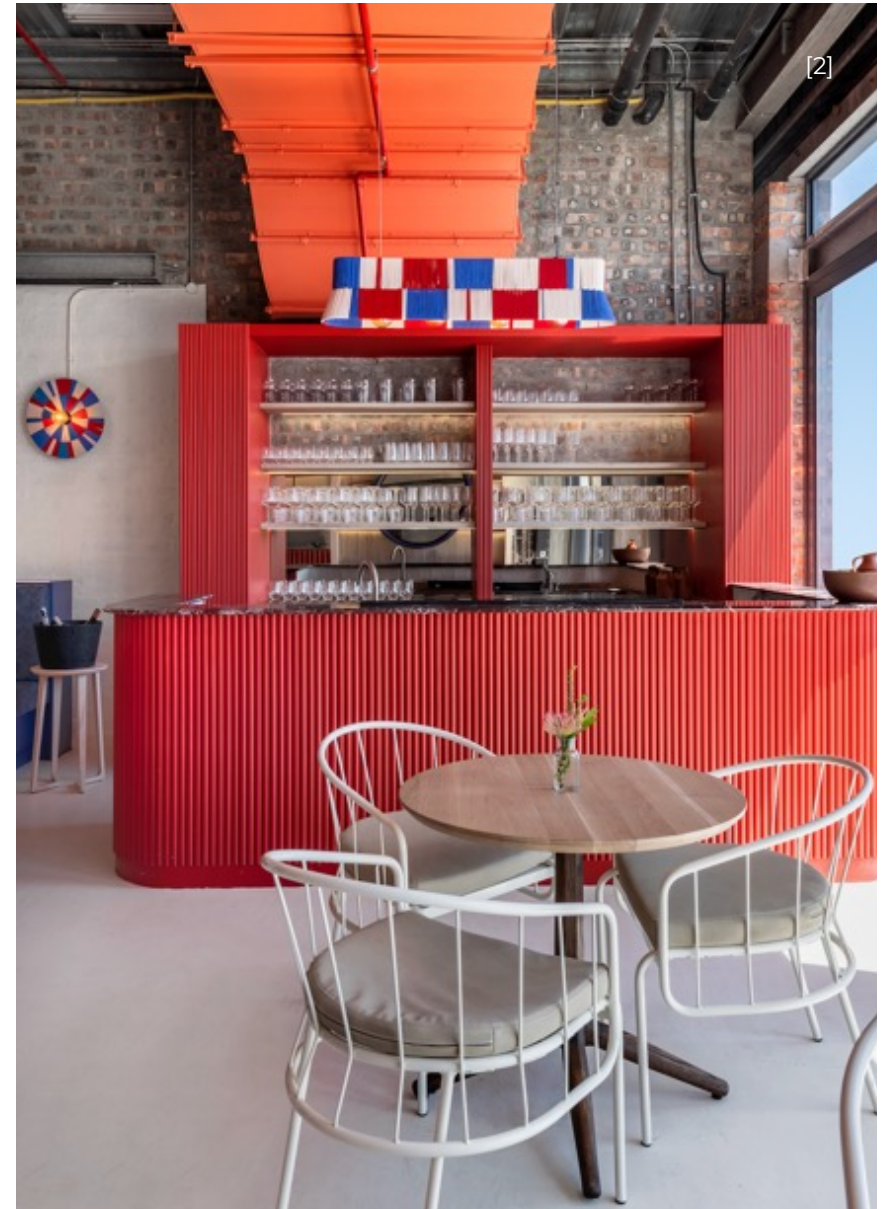


Image: Stand design by Clout/SA for Cape Town Furniture Week 2025. Featuring Thandazani Nofingxana, Vogel design, Siyanda Mbele, Design Africa, and Tanisha Neil.

WHO WE ARE

Clout/SA celebrates the vision and vitality of South African design. We're a business-to-business market maker. A bridge that connects South African designers and makers with local and global commercial opportunities.

At Clout/SA, we celebrate the creative pulse of South African design by sharing our curated collections of furniture, lighting, and décor with clients and collaborators around the world.



Images: [1] Boutique Conferencing centre, The Pines, JHB, Interior design and procurement Clout/SA , implementing designer Proportion Studio of Design, Server, Studio Kalki [2] Makers Landing, restaurant creative direction and procurement Clout/SA and implementing interior designer, White Sheep Studio, Light above bar, UMUGQA STUDIO, wall light Ashanti, chairs Kent and Lane, table Houtlander.



[2]



[1]



[3]

HOW WE'VE GROWN

Clout/SA was seeded in the iconic South African restaurant brand - Nando's - to shine a light on our rich local design industry.

In 2018, we launched the Portal to Africa, a curated online marketplace for interior designers featuring SA's premier designer lighting, furniture, and accessories.

Since then, we've grown into one of the leading exporters of South African design, featuring more than 70 designers and makers, and facilitating the sale of thousands of pieces of authentic design.

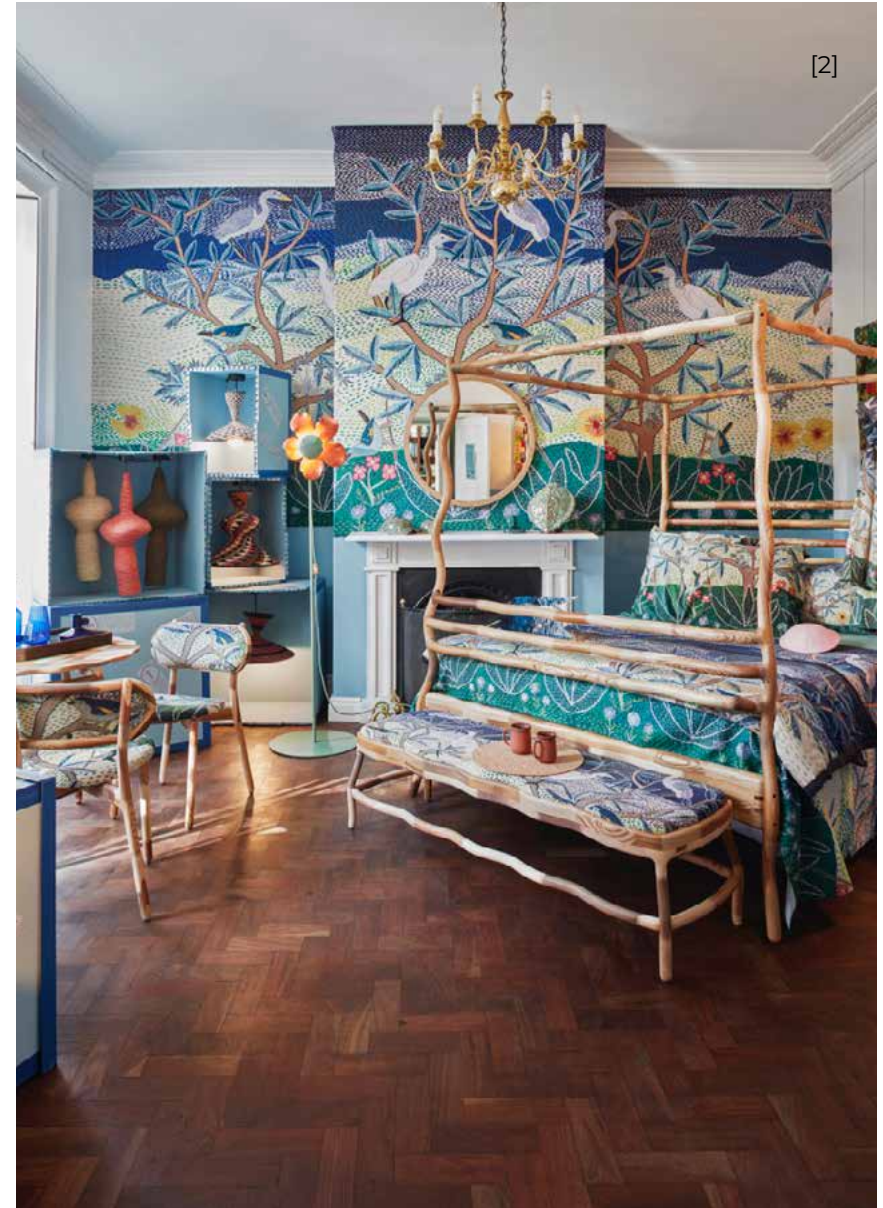
We continue to grow - working with local and global clients committed to sourcing from the country's best emerging and established design talents.

Images: [1] Boutique Conferencing centre, The Pines, JHB, Interior design and procurement Clout/SA, implementing designer Proportion Studio of Design, Carpets, Siyanda Mbele, occasional chairs and side tables Dokter and Misses, Cork ceiling panels and cork side table Wiid Design, [2] Boutique Conferencing centre, The Pines, JHB, Interior design and procurement Clout/SA, implementing designer Proportion Studio of Design, Server and tile mural Studio Kalki, Carpet, Siyanda Mbele. [3] Installation at Clout/SA's Right Here, Right Now exhibition, Creative direction, curation and event production, Clout/SA, this installation features Cork furniture, wall panels, lighting and various other pieces all by Wiid Design Studio.

OUR VISION FOR SA DESIGN

We are passionate about South African design: its creativity, its craft, and its power to shape how the world sees us.

Our vision is for the industry to emerge as a distinct global design brand that combines the country's legacy of craft, heritage, and storytelling with contemporary making techniques. By supporting these values, we ensure that investment flows into local creative and maker communities.



Images: [1 & 2] A bold Clout/SA showcase at 100 Percent design 2025, the top five finalists that participated in our mentorship program were invited to showcase their prototypes and represent their work in person at the show.



[2]



[1]



[2]

Images: [1 - 3] A collection for SOL in store activations and pop-up experiences. Screens by Urbanative, standing lights and benches by Urbanative, rugs by Bonolo Chepape, Folding chairs by P and L, table light by Candice Lawrence, Modern Gesture bar counter by P and L, Planters by Urbanative, Ice buckets by P and L. Hanging pendants by Mash T



SHAPING POSITIVE CHANGE

Our work builds opportunities. We create commercial pathways for both established and emerging South African designers to grow, connect and be seen.

At the heart of this commitment is the Hot Young Designer Programme, a biennial platform that uncovers and mentors the next generation of designers and makers. A portion of every sale supports this work – helping us to draw in and mentor new design talent.

Through collaboration and real-world exposure, these young designers gain the skills, networks, and confidence to grow their careers.

Images: [1 - 3] Hot Young Ddesigners , Walter Train, Thandazani Nofingxana, Nindya Bucktowar, Nikhil Tricam and Candice Lawrence. All shot in situ at CTFW, 2024 AND and 2025, Stand design and curation by Clout/SA.

WORKING WITH CLOUT/SA

As a Marketplace for SA design

Register, browse and select contemporary South African designer furniture, lighting, and decor pieces on our platform.

Once you've found what you're looking for, we'll prepare a quote and manage everything from payment and production to consolidation and delivery.

As a Project Partner

Work with us to bring your commercial projects to life.

Share your project brief, and benefit from a comprehensive solution that centers on SA design, including creative direction, interior design, sourcing, delivery and installation.

This service is available to South African clients only.



Image: Boutique Conferencing centre, The Pines, JHB. Interior design and procurement by Clout/SA, implementing designer Proportion Studio of Design, Server by Studio Kalki, leather occasional chair by Naturalis. Carpets by Siyanda Mbele, occasional chairs by Dokter and Misses, tile wall mural by Studio Kalki and cork ceiling panels by Wiid Design.



Image: Naked Offices, JHB interior design by Clout/SA. Chairs by Dokter and Misses, stools and server by P and L, Cork by Wiid Design, Desks by Spaas. Table by Houtlander, Pendant Lights by Matt Edwards.



Image: Clout/SA's award winning showcase at Decorex Cape Town, 2022. Concept, design and implementation by Clout/SA featured designers, Banner by Zinhle Sithebe in collaboration with the Ilukuluku Collective, Lights by Siviwe Jali, manufactured by Ashanti Design. Cabinet by Khwebula Arts. Planters by Khosi Leteba for Plantr.

OUR CLIENTS



STEYN GROUP



Naked



AVFRICVA



**SPIER
ARTS
TRUST**

MEET THE TEAM

CLOUT/SA



TRACY-LEE LYNCH
Executive Creative Director

tracy@cloutsa.com



NOKUZOLA JENNESS
Executive Director

Zola@cloutsa.com



BASANE MASHABA
Business and Operations
Manager

Basane@cloutsa.com



NJABULO NHLAPHO
Platform Manager

Njabulo@cloutsa.com



LESETJA SEKHAOLELO
Financial Accountant

Lesetja@cloutsa.com



YASMEEN PATEL
Finance and Project
Administrator

Yasmeen@cloutsa.com

WHAT WE VALUE AT CLOUT/SA



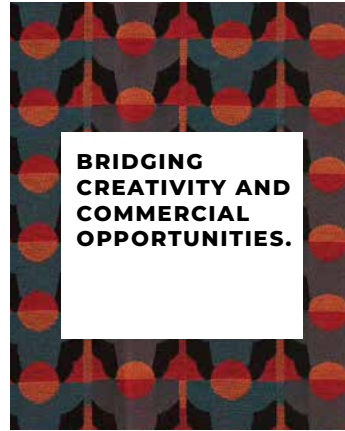
**CELEBRATING
SOUTH AFRICAN
CREATIVITY
AND THE
POSITIVE
STORIES THAT
SHAPE US.**

We are passionate about South African design: its creativity, its craft, and its power to shape how the world sees us. Through design, we tell stories of identity, heritage, and possibility.



**OUR LONG-TERM
PARTNERSHIP
WITH SOUTH
AFRICAN
DESIGN.**

With decades of shared experience, our understanding of the local design landscape shapes every partnership and curation. We've cultivated a community of makers who champion quality, sustainability and authenticity. This ongoing commitment advances the craft skills and innovation that define SA design today.



**BRIDGING
CREATIVITY AND
COMMERCIAL
OPPORTUNITIES.**

Our platform connects architects, interior designers, and procurement specialists with the very best of South African furniture, lighting, and interior pieces.



**MINIMISING
RISK FOR OUR
DESIGNERS
AND CLIENTS.**

Our goal is to deliver faultless client service throughout the procurement process. This relies on supporting our collaborating designers and makers with clear, effective communication, manageable time frames and fair trading terms.



**GROWING
LOCAL DESIGN
TOGETHER.**

Empowering new talent is central to who we are. We nurture the next generation of South African designers and guide them in finding their place on a broader stage.



Images: [1-4] Project Union House interior redesign. Concept, design and implementation by Clout/SA. Boardroom table by James Mudge. Wallpaper and fabric by the Keiskamma Art Project. Wool rug by Spier Arts Trust. Ceramic screen by Studio Kalki. Existing boardroom chairs retained. Artwork by Joe O'Connor, recreated in mosaic and digitally printed on fabric. Lizzy Light by MashT Design Studio. Server by Dokter and Misses and planter by Plantr. Beaded artwork by Qaqambile Bead Studio. Horse Shoes booth by Casamento Design. Cork pendants and cladded cork wall by Wiid Design. Additional planter by Urbanative and woven pendants by MashT. Naturalis chairs upholstered in Joe O'Connor print and table by Acre with powder-coated base and terrazzo top. Desks by Desk Topia, printed fabric screens featuring patterns by Glorina Mabaso, and rugs by Yudu.



OUR DESIGNERS

Wiid
Studio Lloyd
Pedersen + Lennard
Ananta Design Studio
Bofred
Arkivio
Jacobs Collection
Kino
Mash T
The Urbanative
Vogel
PlantR
Hope Garden Furniture
Mema Designs

David Krynauw
The Ninevites
Anatomy Design
Houtlander
Doker and Misses
Kalki Studio
Naturalis
Acre

[1] Image: Pedersen + Lennard
[2] Image: wiid Design
[3] Image: Studio Lloyd



CORK AND STEEL BENCH



STEEL AND CORK BAR STOOLS. Photo by Justin Patrick

WIID DESIGN

Wiid Design is celebrated for its imaginative work with cork. In his Cape Town based studio, Laurie Wiid van Heerden transforms this sustainable material into high-end pieces of art. Working collaboratively with other artists and materials, Laurie's collection of furniture, lighting, tableware and collectible objects merge cutting-edge manufacturing with handcrafting. As an African "ambassador" for Portuguese cork producer Amorim, Laurie has achieved several world firsts including the largest cork pendant light and cork cabinet, both of which were exhibited by Southern Guild.



Image: Laurie Wiid van Heerden
Photo by Bennie Wessels

wiid.design®



AFRICAN CORK PENDANT
100% organic and sustainable dark or light cork |
Stainless steel suspension cable & fittings | Black
fabric cord and black ceiling cup



AFRICAN CORK PENDANT
100% organic and sustainable dark or light cork |
Stainless steel suspension cable & fittings | Black
fabric cord and black ceiling cup



TONGA ROUND SIDE TABLE
Fully recyclable dark composite or light façade
cork, durable black ferro grain coating base plates
and fitted with felt feet.



CORK, STEEL AND CONCRETE BAR STOOL
Concrete | 100mm thick cork | engineered steel
components.



CORK AND STEEL BENCH
50mm dark or light composite grade cork | Electro-galvanized mild steel and finished in a durable black
ferrograin powder coating

*Photography
by Justin Patrick



OPTIC WALL LAMP



MAONI DAYBED

STUDIO LLOYD

Studio Lloyd founder Ashleigh Lloyd is a three-dimensional product and lighting designer with a deep love for textiles and a fascination with light. Her vision is to create functional, emotive pieces that captivate both the eye and the senses. Each work is crafted with meticulous attention to detail, evolving organically through a balance of material and form. By pairing unexpected textures and luxurious, high-quality materials, Lloyd creates lighting that feels both sculptural and intimate, a true expression of individuality and craft.

STUDIO LLOYD



Image: Ashleigh Lloyd



OPTIC LIGHT PENDANT
Poly-braided rope | unlacquered brass | nickel powder coated steel natural stone



KIMONDO SIDE TABLE
Iroko hardwood | natural stone



OPTIC WALL LAMP
Poly-braided rope | unlacquered brass | nickel powder coated steel natural stone



THEIA TABLE LAMP
Poly-braided rope | unlacquered brass | clay powder coated steel



MAONI DAYBED
Iroko hardwood | umbrella fabric mattress | poly-braided stainless steel railing

*Photography
By Chelsea Pickering



OSAKA TABLE | OSAKA CHAIR



TULBAGH TABLE | CHAIRS

*Photography By Katinka Bester

PEDERSEN + LENNARD

Honest and pared back, the creations of James Lennard and Luke Pedersen hero thoughtful design and local, sustainable manufacture. Serious about quality production, Pedersen + Lennard’s collection of Afro-Scandi furniture and homeware balances minimalist simplicity with intergenerational durability. These are low impact legacy pieces, built to stand the test of time.

PEDERSEN + LENNARD



Image by Roy Wrench:
James Lennard & Luke Pedersen

**PEDERSEN
+ LENNARD**



TULBAGH ALL TIMBER CHAIR
Solid wood chair



ESCARPMENT SHELVING SYSTEM M02
Solid oak wall mounted shelf



TULBAGH FIVE TIER SHELF
Free standing solid oak shelf with steel fixing

*Photography By Katinka Bester

CLOUT/SA



OSAKA COFFEE TABLE



TULBAGH BENCH - RIEMPIE SEAT 2
Solid wood bench with woven leather seat

*Photography By
Pedersen + Lennard



MAATA PITA TABLE LAMP | ORANJEZICHT BRIGHTS



PURNA VASE FROEST GREEN | Ai image by Gavin Goodman

ANANTA DESIGN STUDIO

The pieces that make up sister duo Viveka and Rucita Vassen 's Ananta Design Studiocollective are as colourful and vibrant as the designers themselves. The is a Cape Town-based multidisciplinary studio founded by sister duo Viveka and Rucita Vassen. Idraws from thenspired by the vibrancy and threads confluence of their African roots and Indian heritage, producing the studio celebrates cultural duality througha culturally rich and joyful collectible assortment of furniture, lighting, and decor that is both joyful and deeply meaningful.

Together, they reimagine traditional craft techniques into bold, contemporary designs rooted in community and craft. Rooted in a commitment to craftsmanship and community, Ananta works closely with local craft communities, reimagining traditional techniques into bold contemporary designs. Each piece is a fusion of joyful blend of colour and, pattern, underpinned by stories and narrative, telling stories that bridge past and present, heritage and innovation.



Image: Viveka Vassen and Rucita Vassen



TRIMURTI HANGING LIGHT RAINBOW
Welded frame | fabric waste | woven glass beads



TRIMURTI DISSOLUTION PENDANT 1B
Welded frame | fabric waste | woven glass beads



TRIMURTI CREATION PENDANT 1C
Welded frame | fabric waste | woven glass beads



MAATA PITA TABLE LAMP FAMILY
Glass beads | MDF | resin coating



MAATA PITA TABLE LAMP | AI IMAGE BY GAVIN GOODMAN
Glass beads | MDF | resin coating



ALBERTO CLUB CHAIR



BOFRED SHOWROOM

BOFRED

Bold in their simplicity, Bofred's designs Combining meld a Mmodernist elements aesthetic with authentic craft and storytellingnarratives. Founders, Christa Botha and Carla Erasmus seek to celebratee and showcase the beauty of natural materials like wood, clay, stone, and metalsin their production, with each collection's colours palette and product names nodding providing insight intoto the stories and memories that inspired it. CAs they grow as designers and friends, each shift into a new season of life makes it all the more gratifying and important to translate the subtleties of time and place to creating beautiful, relevant, and useful objects is at the heart of what this Cape Town studio does.

BOFRED



Image: Christa Botha and Carla Erasmus

BOFRED



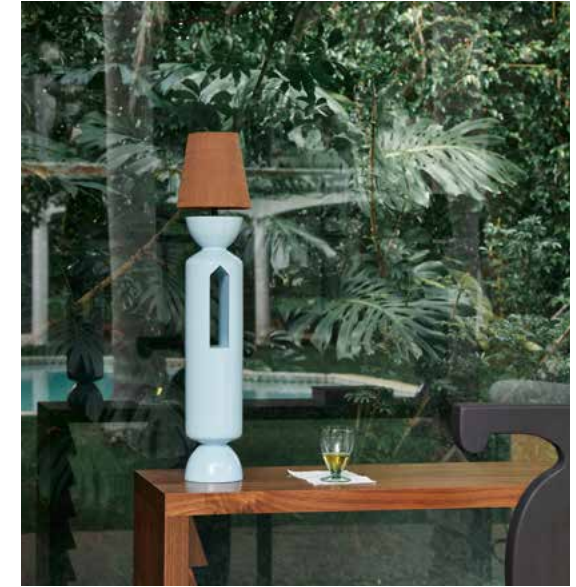
POOLHOUSE CHAIR

Chair fabric: Romo Pergola Rust | Smooth III Evergreen | Cape Mohair Truffle | Warwick Manolo II Atlantic Black-stained Oak Wood inlays



BASK DOME PENDANT

Shade: Sand-Plaster Composite | Chain: Brass



RESORT TABLE LAMP

Base: Mahogany | Shade: Fabric



BAHLA CHAIR

Solid Ash Wood: Black-stained | Unstained



MOORE BENCH

Bench fabric: Romo Linara Nile | Malmo Waterlily | Osumi Mistral | Legs: Ash wood in a black finish



ISIBO WALL PENDANT



LUKIWE SENGA FLOOR LAMP

ARKIVIO

At once elegant and contemporary, Arkivio's range of mirrors and lights convey a love of natural materials and local craftsmanship. In their Durban-based studio, meticulous handiwork meets seamless technical detailing. Here, woven rattan, glass beading and leather binding combine with concealed light sources and dimmable, motion-sensored LED activation. Arkivio elevates everyday objects into the ranks of art lights and sculptural mirrors.



Image: The Arkivio Team

arkivio



LUKIWE SENGA FLOOR LAMP
Aged Solid Brass, 3mm Center Cane, Oak Veneer.
2K Clear Coat | Applied to all precious metal finishes.



ISIBO PENDANT
Solid Brass Aged | Natural Leather | 2K Clear Coat
Applied to all precious metal finishes.



LUNA WOVEN SEASHORE
Powder coated Steel



ISIBO CIRCULAR LEANING, SAVANNAH
Powder coated Steel | Glass Beads | Cord |
Premium-grade 5mm mirror.



ISIBO CIRCULAR, ICFF 2025
Powder coated Steel | Matte Glass Beads | Leather | Stained Oak & Natural Oak Premium-grade 5mm mirror



DRAFTING DESK



JC CABINET SMALL

JACOBS COLLECTION

Strong lines are the golden thread that connect each piece in the Jacobs Collection. Founder Christine Jacobs-Goosen imbues each of her furniture pieces with a sense of contemporary sophistication, employing architectural forms and elegant finishes. Her bold statement pieces celebrate the beauty of materials like steel, merino wool and ash wood, while her fine art background brings creative expression to her 100% wool collections.



Image: Christine Jacobs Goosen



**JACOBS
COLLECTION**



HOOP CHAIR
Steel | Fabric | Upholstery



BOW CABINET
Steel | Ash wood | Glass



BY YOUR SIDE TABLE
Steel | Ash wood | Marble(POA)



SERALA DRINKS CABINET
Steel | Ash wood veneer | Limesite stone
Glass Brass



JC ENTERTAINER LARGE
Steel | Ash wood | Marble(POA) | Glass



KINO DINING CHAIR Natural Ash



KINO STITCH TABLE 2400 Mushroom + Camel

KINO

Founded by designers Nico Hendriksz and Anton Louw, Kino's pared-back furniture belies the technical skill behind its making. Working in ash, oak and walnut, their chairs, tables and storage pieces balance high-performance functionality with humble, understated forms. These solid-wood creations stand out for their honesty and come to life through precision manufacturing and careful detailing.

kino



Image: Nico Hendriksz and Anton Louw

KINO



STOK BARSTOOL
Solid Timber (Ash | Oak | Walnut)



KINO VANITY STAND
Solid Timber (Ash | Oak | Walnut) Mirror



NEUT BEDSIDE TABLE
Solid Timber (Ash | Oak | Walnut)



KINO DINING CHAIR
Solid Timber (Ash | Oak | Walnut)



KLIP DINING TABLE | TIMBER TOP
Solid Timber (Ash | Oak | Walnut)



BRIGHT SIDE TABLE



NOODLE SOFA

MASH T

Mash T Design Studio, founded by Thabisa Mjo, brings together technology and tradition, weaving cultural stories into every object. From the award-winning Tutu 2.0 Pendant Light to the sculptural Hlabisa Bench created in collaboration with Houtlander, Thabisa’s pieces combine meticulous craft, contemporary design, and local storytelling – turning everyday objects into artful expressions of our country and its people.

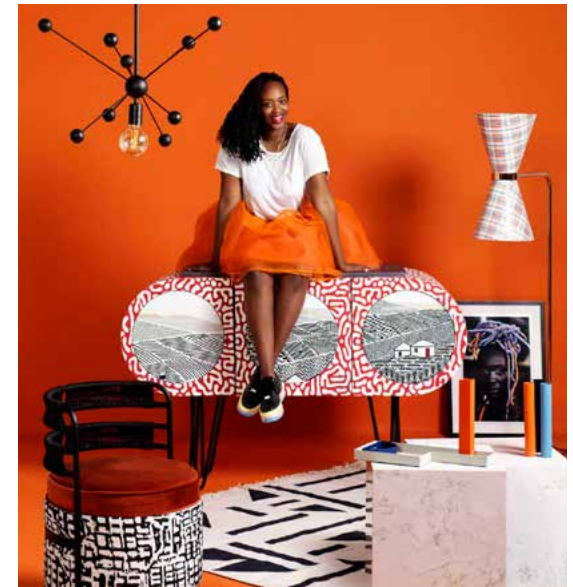


Image: Thabisa Mjo

MASH T



TEEPEE LIGHT
Ilala palm



BACK2BACK LIGHT
Telephone wire



TRUMPET PENDANT
Ilala palm



FLUTE COFFEE TABLE
Terrazzo chips | material 1



CONE PENDANT
Mild steel | linen



OUTDOOR OROMO PLANTER TALL



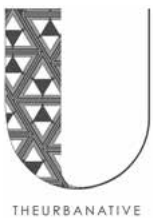
PUMZIKA COUCH

THE URBANATIVE

Designer Mpho Vackier's creations are brought to life by African stories – present and past- and sustainable production, expressed through contemporary design. Drawing from African tribal hairstyles, stories of ancient kingdoms and West African Adinkra symbols, The Urbanative brings the spirit of ancient Africa into the home. Over time, her collection has expanded to include everything from furniture and lighting to planters and mirrors.



Image: Mpho Vackier by Lutendo Malatji



**THE
URBANATIVE**



LUPITA WALL LIGHT
Powder-coated mild steel



OUTDOOR WAMBO POD
304 stainless steel frame, woven mesh
high-performance | weather-resistant fabrics



OUTDOOR BAMBANANI TABLE
304 stainless steel frame | woven mesh



OUTDOOR THABI COFFEE TABLE
304 stainless steel frame and woven mesh



OROMO BENCH
Powder-coated mild steel frame | cord weaving | leather upholstered seat



ROUND RIPPLE TABLE



ANGAMA SERVER Ash Light Grey

VOGEL

John Vogel's work explores organic forms and the idea of shape as an intuitive language that evokes emotion. Over time, he has experimented with a range of materials but continues to return to wood, a medium that grounds his practice in the natural world and reflects his commitment to responsible forestry. His design process is deeply tactile and iterative. Vogel moves to prototyping early, allowing design and production to evolve in unison until form, function, and feeling find balance.



Image: John Vogel

VOGEL



NGUNI DINING CHAIR

Crafted from your choice of Ash | Iroko | American Walnut timber | handwoven seat in premium cord | durable plastic weave



MAGNET LOUNGE CHAIR

Crafted from your choice of Ash | Iroko | American Walnut timber | handwoven seat in premium cord | durable plastic weave | leather-upholstered cushions



MAMBA TUB CHAIR

Crafted from your choice of Ash | Iroko | American Walnut timber | handwoven seat in premium cord | durable plastic weave



ODI DINING CHAIR

Crafted from your choice of Ash | Iroko | American Walnut timber | handwoven seat in premium cord | durable plastic weave



NGUNI BENCH

Crafted from your choice of Ash | Iroko | American Walnut timber



CONVA SHORT



LOW POLI ALOE

PLANTR

Based in Cape Town, Plantr takes a simple need—somewhere for plants to live—and elevates it with a clever service-led approach. From their beautifully made premium planters to large-scale custom installations crafted for major developments, they're reshaping what sustainable living looks like. And behind each planter or green project is a team of engineers, designers and makers who care as much about how things work as how they look. Their planters match beauty with purpose.



CUSTOM | HOLY CUBE

PLANTR



CONVA TALL
Indoor | Outdoor



LOW POLI ALOE
Indoor | Outdoor



THE TOTEM
Indoor | Outdoor



THE TOTEM
Indoor | Outdoor



LOW POLI ALOE
Indoor | Outdoor



OLY KITCHEN STOOL



ORIGAMI DECKCHAR

HOPE GARDEN FURNITURE

Hope Garden Furniture is rooted in the making of timeless iron outdoor pieces, made to last generations. Their handcrafted garden furniture is made from honest materials like solid timber, stone, and iron using artisanal blacksmith techniques and restored 1950s machinery. The company launched in 1992 with iconic staples like the deck chair and folding café chair and has since produced more modern iterations of alfresco classics, bringing style back to the garden.



CAFE CHAIRS

HOPE



ORIGAMI DECKCHAR | ORIGAMI FOOTSTOOL
304 grade stainless steel tubing | poly cotton canvas



OLY KITCHEN STOOL
Mild Steel | Massaranduba Timber



NAN BENCH 1500
Mild Steel | Massaranduba Timber



CAFE CHAIRS BUILDING BLUE
Mild Steel | Massaranduba Timber



OLY STOOLS NAN TABLE SQUARE BLACK MASSARANDUBA
Mild Steel | Massaranduba Timber

CLOUT/SA

*Photography By
Mike Hall



WING



WATERLILY

MEMA DESIGNS

Based in Johannesburg and run by Sian Eliot, Mema Designs is renowned for its elegant and ethereal aluminum mesh lighting. Weaving this unexpected material into sinuous, organic and nature-inspired forms, their lights bring wonder to the spaces that they illuminate. A Mema Designs light is as much an exploration of engineering as it is artistic expression.

m e m a
DESIGNS®



Image: Sian Eliot

**MEMA
DESIGNS**



SHIELD
Aluminium



WATERLILY
Aluminium



PETALS
Aluminium



SCONCE
Aluminium



FAN LAMP
Aluminium



JOBURG CHAIR 20 DREAMSCAPE



JOBURG ARMCHAIR 01

DAVID KRYNAUW

David Krynauw, born in 1984 in Piet Retief, grew up with a deep passion for woodwork inspired by his father. After studying Agriculture and Winemaking at Stellenbosch and briefly working as a winemaker, he returned to his family farm in 2007 to pursue furniture design. His breakthrough came in 2008 with the award-winning Dome Pendant Cluster, followed by international recognition for his Haywire light. Innovating with CNC technology, he developed the “Joburg Method,” enabling complex designs and earning Designer of the Year in 2015. Today, David leads a thriving design and build business at Victoria Yards, creating furniture, architectural projects, and sustainable building solutions while mentoring young talent and pushing boundaries in timber design.



Image: David Krynauw



**DAVID
KRYNAUW**



JOBURG ARMCHAIR 01
Wood | Fabric | Leather



JOBURG BARCHAIR 20
Wood | Rattan



MODOLA LURE CEILING LAMP
Wood | Steel | Cord



JOBURG KAS 02
Wood



JOBURG BENCH 09
Wood | Fabric | Leather



TABBY GREEN DETAIL



GRENADA RUG

THE NINEVITES

The Ninevites is a textile design studio rooted in conscious making. Founded by Nkuli Mlangeni-Berg, the studio celebrates collaboration, working with artisans across the world to create rugs, cushions, blankets, and limited-edition pieces. Currently based in Stockholm, Mlangeni-Berg continues to return to her source of inspiration: African traditions, black culture, and community upliftment. Using locally sourced, OEKO-TEX-certified fibres, The Ninevites honours both people and planet.



Image: The Ninevites team

The Ninevites™

THE NINE VITES



UMA RUG
100% SA Mohair | Sheep Wool Options



IMITHA RUG
100% SA Mohair | Sheep Wool Options



OZENEZULU RUG
100% SA Mohair | Sheep Wool Options



KWAMEH RUG
100% SA Mohair | Sheep Wool Options



TABBY SAND
100% SA Mohair | Sheep Wool Options



CHARLES SWIVEL Upholstery | Steel



TENGILE SOFA Oak | Upholstery | Brass

ANATOMY DESIGN

Anatomy Design prides themselves on creating objects made to last. Founded in Johannesburg in 2010, the studio first drew attention when its elegant, industrial Lab Light was named Most Beautiful Object in South Africa by Design Indaba. Since then, founders Megan Hesse and Andrea Kleinloog have built a brand defined by contemporary sophistication. Timeless pieces destined to become future heirlooms, their locally made homeware, lighting, and furniture collections balance utility and beauty.



Image: Andrea Kleinloog and Megan Hesse

ANATOMY DESIGN

**ANATOMY
DESIGN**



SARAH BENCH
Upholstery | Oak | Cane



CHUNKY SIDE TABLE
Steel | Marble



ROBERT WINGBACK
Upholstery | Oak



JANIS BOOKSHELF
Brass | Oak



DEREK CORNER SOFA
Upholstery | Steel



INTERIOR CAFE TABLE | LOW BACK DINER
CURVED MILK BENCH



INTERIOR STUDIO: SPINDLE COUCH 3-SEATER

HOUTLANDER

Houtlander's furniture presents Scandi simplicity crafted on African soil. Founder Phillip Hollander's chairs and tables have become a go-to for numerous commercial and hospitality spaces, each time channeling understated beauty. By marrying traditional techniques with technology- Houtlander's elegantly pared back furniture is brought to life.



Image: Phillip Hollander

HOUTLANDER



DESK WALL UNIT

Serving unit with 48 litre drinks fridge included, solid wood



CLASSIC BAR STOOL

Bar stool, solid wood



CLASSIC DINER

Dining chair, solid wood, upholstered back or seat



HOME OFFICE DESK

Office desk 1200mm long, solid wood with various add-on features available



SIDEBOARD 2M

Sideboard with 3 shelves and drawers, solid wood



DISCO CHAIR Solid Ash



BIG BANG DESK LAMP Hinge Unit - 4 Door

DOKTER AND MISSES

Founded in 2007 by Adriaan Hugo and Katy Taplin, Dokter and Misses is synonymous with bold and expressive furniture. The award-winning Johannesburg-based design studio makes objects that challenge convention and reinterpret everyday forms. Their work blends colour, geometry, and wit, resulting in distinctive pieces that are beautiful, practical, and make a statement.



Image: Founders Adriaan Hugo and Katy Taplin

DAM

DOKTER AND MISSES



LALA CABINET
Powder coated steel Concrete



EASY MEDIA UNIT
Powder coated steel | Solid Ash



COBRA CHAIR
Powder coated steel | Solid Ash | Leather | Fabric



CACTUS COAT STAND
Powder coated steel Concrete



LOWVELD BED
Powder coated steel | Birch ply base board



CROCODILE BENCH



INWABU BENCH

STUDIO KALKI

Based in Durban, Studio Kalki is a multidisciplinary design studio in the true sense of the word. Co-founders Nikhil Tricam and Nindya Bucktowar weave together their collective disciplines in art-making, ceramics and architecture, resulting in a product offering that's uniquely theirs.

The duo is best known for creating bespoke handcrafted ceramic tiles and functional furniture, cued by South Africa's natural heritage. Their work includes a wide range of pieces, such as sculptural sofas, drinks cabinets, wall sconces, and tiles inspired by local flora.



Image: Nindya Bucktowar and Nikhil Tricam

**STUDIO
KALKI**



SCREENS
Clay | Brass | Steel



TILED PANELS
Steel | Ceramic tiles | Plywood | Adhesive



SOFA
Steel | Leather | Fabric



BOOMSLANG
Timber [Oak or similar] | Ceramic tiles | Plywood
Brass



CROCODILE SERVER
Steel | Ceramic tiles | Plywood | Brass



BEAN COUCH



FLAPPER CHAIR | THE STERN | TWEEN CHAIR

NATURALIS

Naturalis believes in functional design, made with craft and flexibility in mind and specialises in high-quality, customisable seating and furniture solutions. From perforated metal garden benches to fully upholstered auditorium seating, their work combines durability with design versatility. The Miyabi collection, for example, is a contemporary take on the classic café chair - offered in an array of finishes from powder-coated metal to leather upholstery. Naturalis also produces tables and storage pieces, all connected by their dedication to function, comfort, and craft.

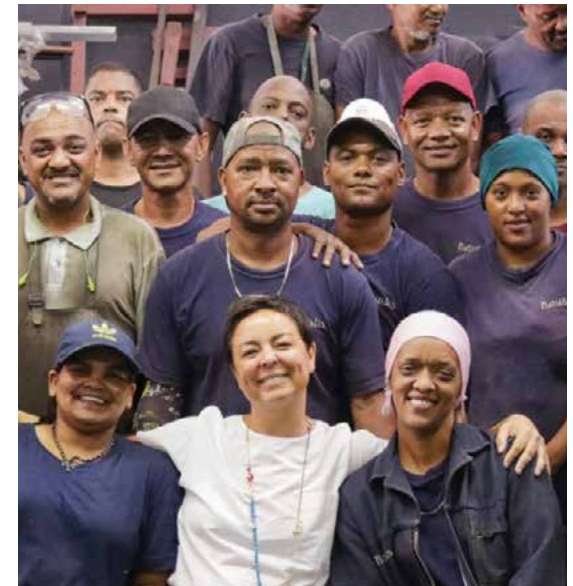
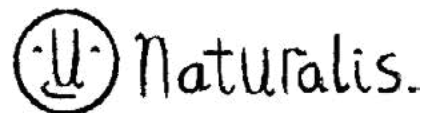


Image: The Naturalis team

NATURALIS



MIYABI OUTDOOR SOLID
Mild Steel 25 round tubing | sheet solid metal seat & back



MIYABI OUTDOOR PERFORATED
Mild Steel 25 round tubing | perforated sheet metal seat & back



MIYABI DAFFODIL PRINTED SEAT & BACK
Mild Steel 25 round tubing | sheet solid metal seat & back



MIYABI OUTDOOR BENCH SOLID
Mild Steel 25 round tubing | sheet solid metal seat & back



SOLID OUTDOOR BENCH
Mild Steel 25 round tubing | sheet solid metal seat



ROLLER COFFEE TABLE | BLACK & BURGUNDY



HOLEY SOFA | OLIVE, ZINC & NAVY

ACRE

Founded by Lianel de Jongh and Lindy Swart, Acre is a Johannesburg studio that understands the link between design and mood. The power of good design, they say, is its ability to elicit a feeling. Locally made by hand here in South Africa, their contemporary furniture pieces are united by streamlined silhouettes and considered tactility. Their creations are made to order and built to last.

ACRE



Image: Lianel de Jongh and Lindy Swart

ARCE



LARGE MARGE PENDENT LIGHT
Fabric covered wire frame | Brushed brass end cap | Black fabric cable | Black ceiling cup



LARGE MARGE
Shade: Wire frame | fabric covered | brushed brass end cap Base: Wire frame, fabric covered | Cable:



TALL AND SHORT FOLD SIDE TABLE
Powder coated Mild Steel



ROLLER TERRAZZO
Top: Notation Protea Pebble terrazzo | Base: Powder coated mild steel



OASIS SOFA
Solid white ash timber | Brass detailing

CLOUT/SA

Clout/SA's showcase at CTFW 2024 featured the enchanting wallpaper and fabric design 'Stitched, A Story of Our Home.' This unique collaboration set out to amplify craft and create a passive income generating opportunity for The Keiskamma Arts Trust. This decorative design is featured on wallpaper and fabric and was conceptualised and designed by Tracy Lynch in collaboration with the Keiskamma Art Trust. The room set qualified as runner up for the best showcase for CTFW 2024 and was designed and produced by Clout/SA. The wallpaper was printed and installed by Cara Saven Design; also included is a collection of furniture by David Krynauw with fabric available through Clout/SA and seen here as bedding as well as a dress by Nineteenseventy1. New woven lights are by Mash.T Design HYD 2016 winner, ceramic lights by Studio Kalki, Nando's HYD 2022 winners as well as work by Clout/SA partners Wiid Design and Modern Gesture.

